

# PROTECTION COVER

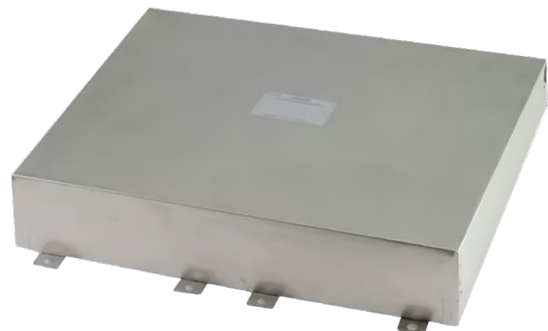
## TYPE EX-COVER

Explosion venting is often selected to protect industrial equipment against the devastating effects of an explosion. In those applications where explosions vents are installed in a position where elements like dirt, snow, wind or ice may influence the predictable use of explosion venting, or where vent ducts are used to assure equipment installed inside of buildings can be safely vented, an adequately designed explosion vent protection cover is recommended. If the vents are located on roofs or vessel tops, these covers will also provide additional safety by preventing personnel from falling through the vent.

The Fike Ex-Cover offers a lightweight, corrosion resistant environmental protection for Fike Explosion vents, reducing the effects of dirt, wind, snow, etc. to an absolute minimum, whilst the safe functioning of the upstream explosion vent is safeguarded. The Ex-Cover is designed to allow an unobstructed explosion pressure relief, and will assist in reducing the need for preventive maintenance and control. The Ex-Cover has been designed to allow for acoustic or thermal insulation to be integrated. The Fike Ex-Cover has been designed and tested according to ATEX 100a (European Directive 94/9/EC) requirements.

### FEATURES AND BENEFITS

- Allows for unobstructed explosion pressure relief.
- Safe functioning of explosion vent is safeguarded.
- Reduced need for preventive maintenance and control.
- Lightweight, corrosion resistant environmental protection.
- Allows for integrated thermal and acoustic insulation.
- Designed and tested according to ATEX 100a (European Directive 94/9/EC) requirements.



### SPECIFICATIONS

Type	Ex-Cover	
Shapes	Rectangular	Round
Material of Construction	1.4301 (304 SST)	
Gaskets - circular shape only	Silicone	
Operating Temperature Range	-40°C up to 150°C	
Compatible Vent Shapes	CV, CV-5, CV-CF, CV-Hand others	
Optional Thermal / Acoustic Insulation	Cellular Rubber - thickness 32 mm	
Ingress Protection	IP Sx - rectangular execution IP 6x - circular execution	

# PROTECTION COVER

## TYPE EX-COVER

Rectangular shaped explosion vents <sup>2</sup>	Circular shaped explosion vents <sup>3</sup>
Nominal size	Nominal size
A x b (mm)	DN
Stocked sizes	Stocked sizes in LAF I PN10 I 150 ANSI configuration
470 X 570	
500x 1000	
566 X 900	
625 X 625	
625 X 1110	DN800
900 X 900	Non-stocked sizes (all configurations)
1000 X 1000	
1110 x 1110	DN150
Non-stocked sizes	DN200
400 X 500	DN250
500 X 500	DN300
500 X 600	DN350
500 X 700	DN450
500 X 800	DN550
500 X 900	DN700
600x 1000	DN750
700x 1000	DN900
800 X 1000	DN1000
900 X 1000	DN1100
	DN1200

(1) Other sizes available - consult factory.

(2) For use on corresponding vents without vent ducts, or for use at the outlet of venting ducts.

(3) Only for use at the outlet of venting ducts.



VALWO s. r. o.  
Hrabinská 498/19,  
737 01 Český Těšín, Česká republika

+420 603 933 363  
email: [office@valwo.eu](mailto:office@valwo.eu)

website:  
[www.valwo.eu/en](http://www.valwo.eu/en)

VALWO s. r. o. informs, that this product sheet does not constitute an offer according to the law, but is only of informative character. All data available in this product sheet have been prepared basing on manufacturer's materials.  
The data contained herein may be subject to change.

