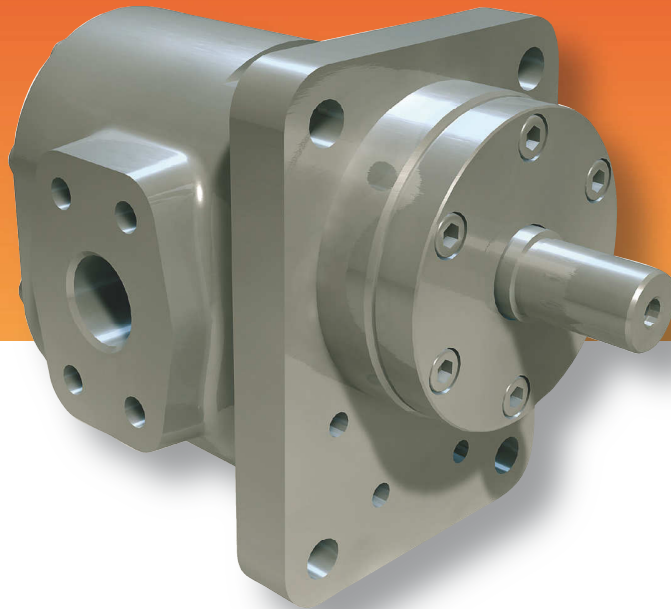


# hydrolub®



## A range of typical pumping media:

- Polyurethanes (polyol und isocyanate)
- Silicones
- Paints and varnishes
- Waxes and paraffins
- Detergents
- Fertilizers
- Mineral oils and fats
- Fuels
- Petrochemical products

## Highest reliability

Continuously operated equipment calls for reliable components. Whether in lubrication oil applications or in processing plants, a pump is required to work inconspicuously yet reliably. Precisely the environment in which Maag Pump Systems' tried and established gear pumps develop their full potential. hydrolub® gear pumps are highly reliable **cast iron conveying units** that satisfy the stringent quality requirements of today's industrial plant technology.

Thanks to the extensive range of components and materials of construction to choose from, Maag gear pumps can be configured to suit customers' specific requirements and are therefore far superior to standard pumps in terms of performance and reliability. Whether the applications involve highly pure, corrosive, viscous or very hot media, Maag Pump Systems holds the solution to meet every pumping challenge.

- Wide viscosity range
- Wide temperature range
- Wide pressure range
- High efficiencies due to clearances that are adjusted for the applications
- Reliability
- Longevity
- Safety

**Theoretical pumping capacities:**

| Pump size | Theoretical pumping capacities in l/min at 0 bar Δp |            |              |              |              |
|-----------|---|------------|--------------|--------------|--------------|
|           | at 500 rpm  | at 750 rpm | at 1,000 rpm | at 1,500 rpm | at 3,000 rpm |
| 22/6      | 0.64  | 0.96       | 1.28         | 1.92         | 3.84         |
| 22/13     | 1.39  | 2.09       | 2.78         | 4.17         | 8.34         |
| 22/22     | 2.35  | 3.53       | 4.70         | 7.05         | 14.10        |
| 22/28     | 2.99  | 4.49       | 5.98         | 8.97         | 17.90        |
| 28/28     | 5.10  | 7.65       | 10.20        | 15.30        | 30.60        |
| 28/36     | 6.55  | 9.83       | 13.10        | 19.70        | 39.30        |
| 36/28     | 9.95  | 14.90      | 19.90        | 29.90        | 59.70        |
| 36/36     | 12.80   | 19.20      | 25.60        | 38.40        | 76.80        |
| 36/45     | 16.00   | 24.00      | 32.00        | 48.00        | 96.00        |
| 45/45     | 23.15   | 34.73      | 46.30        | 69.45        | 139.00       |
| 45/56     | 28.90   | 43.30      | 57.70        | 86.60        | 173.00       |
| 56/56     | 46.30   | 69.45      | 92.60        | 138.90       |              |
| 56/70     | 58.00   | 87.00      | 116.00       | 174.00       |              |
| 70/70     | 88.00   | 132.00     | 176.00       | 264.00       |              |
| 70/90     | 114.00  | 170.00     | 227.00       | 341.00       |              |
| 90/90     | 186.00  | 278.00     | 371.00       | 557.00       |              |
| 90/110    | 227.00  | 340.00     | 453.00       | 680.00       |              |
| 110/90    | 293.00  | 439.00     | 585.00       |              |              |
| 110/110   | 358.00  | 537.00     | 716.00       |              |              |
| 110/140   | 456.00  | 683.00     | 911.00       |              |              |
| 140/110   | 527.00  | 791.00     | 1,054.00     |              |              |
| 140/140   | 671.00  | 1,007.00   | 1,342.00     |              |              |
| 140/180   | 863.00  | 1,294.00   | 1,725.00     |              |              |

**Application limits:**
**Viscosity:** 0.3 to 4,000,000 mPas

**Temperature:** -30 to 320 °C

**Suction pressure:** Vacuum to 65 bar

**Discharge pressure:** Vacuum to 120 bar

**Flow rate\*\*:** 0.1 to 1,750 l/min

**Accessories:**

- Stands, motor flanges and base plates
- Product connecting flanges
- Couplings
- Motors and gear reducers
- Frequency converters
- Shaft seal systems

**Options:**

- Electrical heating
- Heated seals
- Bi-directional rotation
- Special modifications for demanding applications

**Certificates:**

- ATEX certificate
- 3.1 certificate
- German Air Quality certificate (TA-Luft)
- Performance test certificates

**Technical specifications:**
**Housing:**

- Pressure-resistant cast iron

**Gear shafts:**

- Stainless steel
- Nitrided steel (spur or helical)
- Nitrided steel coated

**Bearing\*:**

- Steel/bronze
- Sintered iron
- Synthetic carbon
- Steel with carbon inserts
- Nitrided steel
- Nitrided steel coated
- Hardened tool steel
- Bronze – CuAl

**Shaft seal:**

- Lip seals and packing
- Single or double mechanical seal
- External mechanical seal
- Interlock or heater connections available
- Magnetic coupling with single or double containment shell

**Connections:** SAE, CETOP, DIN and ANSI flanges

\* Other materials and designs available

\*\* Higher flow rates upon request

The operating limits are dependant upon the service conditions. Please contact Maag Pump Systems for specific applications.