



 Hrabinská 498/19,
737 01 Český Těšín, Česká republika

 +420 603 933 363

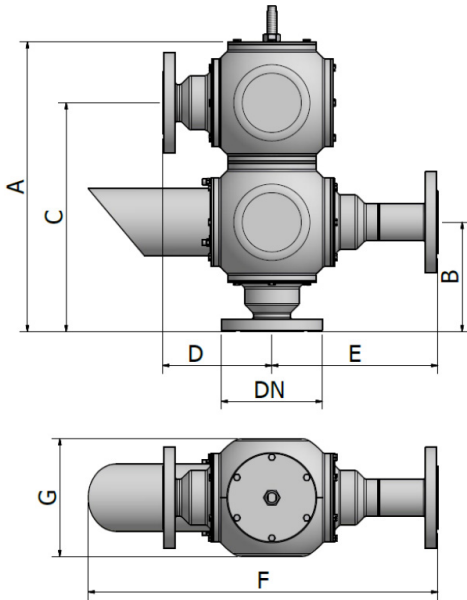
 email: office@valwo.eu

 www.valwo.eu/en

MODULAR BLANKETING
GROUP VALVES

MODULAR BLANKETING GROUP VALVES

The blanketing group valves are safety devices developed to prevent high and low pressures not allowed on tanks and process systems, with the aid of nitrogen in low pressure situations; the MODULAR valve design created by INNOVA provide the best solution to achieve flow performance, high tightness but with a compact and light design.



Technical data standart product

- Settings
Pressure: +2,0 mbarg up to +100 mbarg
+20 mm H²O up to +1000 mm H²O

Vaccum: -2,0 mbarg up to -100 mbarg
-20 mm H²O up to -1000 mm H²O
- Operating temperature
- 29 °C up to 140 °C continue
(+ 210 °C Max working Peak)
-20,2 °F up to + 284 °F continue)
(+410 °F Max working Peak)

If you need non-standard calibrations or temperatures, we will try in evry way to satisfy your request!

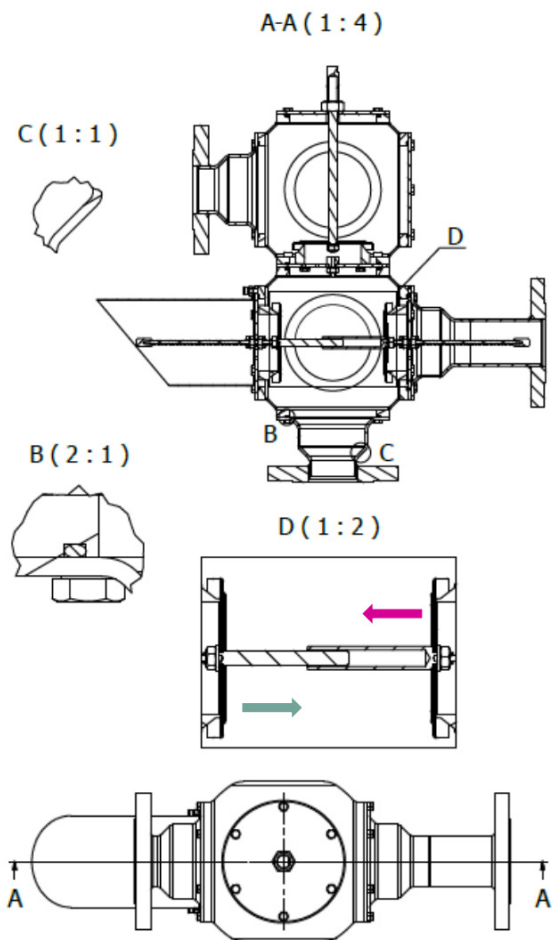
DN	A	B	C	D	E	F	G
25	372	145	295	145	210	439	140
50	473	179	374	179	272	572	192
80	627	231	493	231	353	765	265
100	/	/	/	/	/	/	/
150	/	/	/	/	/	/	/
200	/	/	/	/	/	/	/
250	/	/	/	/	/	/	/
300	/	/	/	/	/	/	/

All measurements are expressed in mm (international metric system S.I.), the dimensions may vary for different reasons, for greater dimensional accuracy ask for the detailed drawing of the selected product.

Materials od construction

Housing	Seat/Pallet	Pallet seal	Weights	Gasket
Aluminium	316 Stainless	Viton	316 Stainless steel	Asbestos free
Stainless steel		PTFE	PTFE	PTFE
Carbon steel		FEP teflon	ETFE coated	Other on request
Other exotic material		Metal to metal	HALAR coated	

MODULAR BLANKETING GROUP VALVES



VIEW-B

O-rings are sealing each housing part giving the possibility to open and reclose the valve for inspection without need to replace them.

VIEW-C

The housing are fabricated from metal sheets providing the highest quality material with less Weight.

VIEW-D

In this view you can see the double side of the vacuum, thanks to this configuration and the help of nitrogen your tank can always work with a positive pressure! according to your needs, only one side will open (purple arrow) and the nitrogen will bring your tank back to the correct pressure. In case of problems with nitrogen supply to the line, the second vacuum (blue arrow) intervenes, preventing the tank from reaching undesired negative pressures.

A new manufacturing method for the highest quality



Starting from the metal sheet, the material is pressed and deformed to get the required shape; the parts are welded together and machined with special systems to achieve a perfect body; the result is a very light but high pressure resistance housing. The raw materials come from Europe and we are the only one providing a 100% Italian manufacturing.





VALWO s. r. o.
Hrabinská 498/19,
737 01 Český Těšín, Česká republika

+420 603 933 363
email: office@valwo.eu

website:
www.valwo.eu/en

VALWO s. r. o. informs, that this product sheet does not constitute an offer according to the law, but is only of informative character. All data available in this product sheet have been prepared basing on manufacturer's materials.
The data contained herein may be subject to change.

